



PROTON MIG **PULS+** 270i

SYNCHRO PULS

HIGH SPEED PROCESSOR

INTERFACE

MULTIVOLTAGE



INTELLIGENT CAR BODY REPAIR

Illuminated interior

Viewing window for the wirepool for quickly checking the amount of wire available.



Independent wire threading

Without having to open the wire-feed unit



New generation of welding torch

Featuring up/down function / system connector + power LED spot.



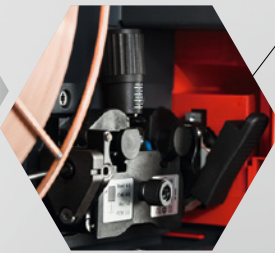
System connector

Reliable and quick welding torch replacement without the need for tools



Colour-coded

Drive rollers



Optionally with raised carriage

COMPACT > UNIVERSAL

➤ Puls / SynchroPuls – quicker and safe pulse process

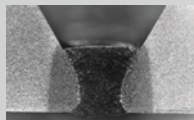
➤ MIG/MAG manual ➤ TIG-DC with SoftStart ➤ MMA welding

Digitally controlled welding process with **parameters specially optimised for bodywork repair** – for a reliable welding result.

- Steel
- Steel root
- Stainless steel
- Aluminium > AlMg 3, AlSi 5
- MIG brazing > CuSi 3, CuAl 9
- CrNi
- Interval welding (S4T Mode)
- Wire diameter
Ø 0,8 / 1,0 / 1,2 / 1,4
(flux core wires up to 1.6)



SynchroPulse weld seam



Root passes



Ergonomic control panel with **DOT matrix display**.

Multilanguage display (22 languages can be set). – All menu items are displayed **quickly and clearly as text** (without abbreviations).

Easy handling including gas test function and wire feed inspection | **EasyJob**: Save performance, dynamic and correction at the touch of a button.
+ Welding data documentation.

HIGH TECH **INTELLIGENCE** | OPTIMUM **PERFORMANCE**

PROTON **MIG PULS+** **270i**

+ MORE CONTROL

The quicker processor performance considers more parameters and therefore allows for even more precise analysis and inspection of the welding process. **MORE EFFECTIVE, CLEANER AND BETTER QUALITY WELDING:** More stable arc and higher welding speed with an optimum wire melting performance – Reduced spattering in the short arc process, precise droplet detachment, controlled ignition characteristics (reduced burnback) and much more.

+ ALWAYS UP-TO-DATE

Thanks to the internet capability of the Proton MIG puls+ 270i, **EASY UPDATE** can be used to stay up to date at all times. Simple upgrading of characteristics, welding processes, applications, etc. via the Ethernet interface (or via USB) – expand and update easily on site!

HIGH SPEED
PROZESSOR

SYNCHRO-PULS

DIGITAL
WELDING TECHNOLOGY

PRE-PROGRAMMED
CHARACTERISTICS
FOR EASY AND PRECISE OPERATION



INTERFACE
ETHERNET · USB



100%
REPRODUCIBLE
WELDING RESULTS



PROTON MIG PULS+ 270i

FEATURES

- ▶ quicker processor performance
- ▶ pulse package including **SynchroPulse**
- ▶ easy update: **Ethernet** and **USB interface**
- ▶ welding data documentation
- ▶ **multilanguage display** (22 languages can be set)
- ▶ 1-phase/3-phase and **MV (multivoltage)**
200 V–460 V = all in one
- ▶ energy efficient
- ▶ special characteristics and functions
for bodywork repair
- ▶ steel, CrNi, AlSi, AlMg, CuSi, CuAl, SP, CrNi
- ▶ tack function
- ▶ interval welding
- ▶ electrode welding
- ▶ viewing window for the wirespool + **LED internal lighting**
- ▶ wire-feed unit with **4-roller drive**
- ▶ welding torch **with LED** and up/down function

The right to make technical modifications is reserved.



TECHNICAL DATA

mains voltage	200 - 460 V
mains voltage tolerance	-10/+15%
10 min/40°C (104 F)	250 A / 40% 210 A / 60% 170 A / 100%
welding current range	3 - 270 A
working voltage range	14.2 - 27.5 V
open circuit voltage	66 V
protection class	IP 23
dimensions l / w / h mm	687 / 276 / 445
weight (without trolley)	33.95 kg
wire feed speed	1-25m / min

CONTENTS INCLUDE

microprocessor-controlled inverter power source
carriage with gas bottle holder (optionally raised with storage room)
welding torch: MTG 250i / Systemconnector / up-down / 3.5 m / 45° / LED
ground cable with clamp 35mm ² / 3m
pressure regulator Ar/CO ₂ standard 3–30 l/min
service spare parts box

OPTIONAL:

electrode welding torch (MMA)



FAN AUSTRIA GMBH
spot welding & car body repair technologies
Herderstraße 44, 4600 Wels, Austria
Tel. +43 7242 - 444 32, Fax +43 7242 - 694 38
office@fan-austria.com
www.fan-austria.com