



PROTON MIG **PULS+** 270i

SYNCHRO PULS

HIGH SPEED PROCESSOR

INTERFACE

MULTIVOLTAGE



INTELLIGENT CAR BODY REPAIR

HIGH TECH INTELLIGENCE | OPTIMUM PERFORMANCE

PROTON MIG PULS+ 270i

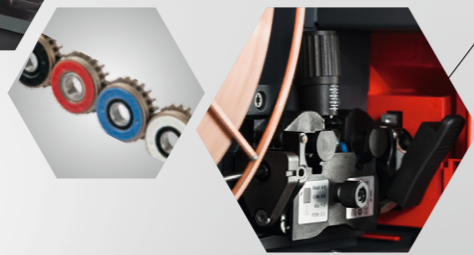
Illuminated interior

Viewing window for the wirepool for quickly checking the amount of wire available.



Independent wire threading

Without having to open the wire-feed unit



New generation of welding torch

Featuring up/down function / system connector + power LED spot.



System connector

Reliable and quick welding torch replacement without the need for tools



Colour-coded Drive rollers



COMPACT > UNIVERSAL

- ▶ Puls / SynchroPuls – quicker and safe pulse process
- ▶ MIG/MAG manual ▶ TIG-DC with SoftStart ▶ MMA welding

Digitally controlled welding process with **parameters specially optimised for bodywork repair** – for a reliable welding result.

- Steel
- Steel root
- Stainless steel
- Aluminium > AlMg 3, AlSi 5
- MIG brazing > CuSi 3, CuAl 9
- CrNi
- Interval welding (S4T Mode)
- Wire diameter
∅ 0,8 / 1,0 / 1,2 / 1,4 (flux core wires up to 1.6)

Ergonomic control panel with **DOT matrix display**. Multilanguage display (22 languages can be set). – All menu items are displayed **quickly and clearly as text** (without abbreviations).

Easy handling including gas test function and wire feed inspection | **EasyJob**: Save performance, dynamic and correction at the touch of a button.
+ Welding data documentation.

HIGH SPEED PROZESSOR

SYNCHRO-PULS

DIGITAL WELDING TECHNOLOGY

PRE-PROGRAMMED CHARACTERISTICS FOR EASY AND PRECISE OPERATION

INTERFACE ETHERNET · USB

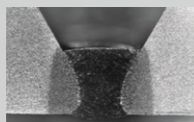
100% REPRODUCIBLE WELDING RESULTS



Optionally with raised carriage



SynchroPuls weld seam



Root passes



PROTON MIG PULS+ 270i



FEATURES

- ▶ quicker processor performance
- ▶ pulse package including **SynchroPulse**
- ▶ easy update: **Ethernet** and **USB interface**
- ▶ welding data documentation
- ▶ **multilanguage display** (22 languages can be set)

- ▶ 1-phase/3-phase and **MV (multivoltage)**
200 V–460 V = all in one
- ▶ energy efficient

- ▶ special characteristics and functions
for bodywork repair
- ▶ steel, CrNi, AlSi, AlMg, CuSi, CuAl, SP, CrNi
- ▶ tack function
- ▶ interval welding
- ▶ electrode welding
- ▶ viewing window for the wirepool + **LED internal lighting**
- ▶ wire-feed unit with **4-roller drive**
- ▶ welding torch **with LED** and up/down function

The right to make technical modifications is reserved.

TECHNICAL DATA

mains voltage	200 - 460 V
mains voltage tolerance	-10/+15%
10 min/40°C (104 F)	250 A / 40% 210 A / 60% 170 A / 100%
welding current range	3 - 270 A
working voltage range	14.2 - 27.5 V
open circuit voltage	66 V
protection class	IP 23
dimensions l / w / h mm	687 / 276 / 445
weight (without trolley)	33.95 kg
wire feed speed	1-25m / min

CONTENTS INCLUDE

microprocessor-controlled inverter power source
carriage with gas bottle holder (optionally raised with storage room)
welding torch: MTG 250i / Systemconnector / up-down / 3.5 m / 45° / LED
ground cable with clamp 35mm ² / 3m
pressure regulator Ar/CO ₂ standard 3–30 l/min
service spare parts box

OPTIONAL:

electrode welding torch (MMA)



FAN AUSTRIA GMBH
spot welding & car body repair technologies
Boschstraße 45, 4600 Wels, Austria
Tel. +43 7242 - 444 32
office@fan-austria.com
www.fan-austria.com